

est 1979

Jeremy  
Leaf & Co.



Ashburnham Close, London

£900,000





- 3 bedrooms
- 2 reception rooms
- 1,173 sq ft
- Great transport links
- Chain Free
- 2 bathrooms
- End terrace house
- Close to local amenities
- Viewing recommended

98 High Road, London, N2 9EB  
020 8444 5222

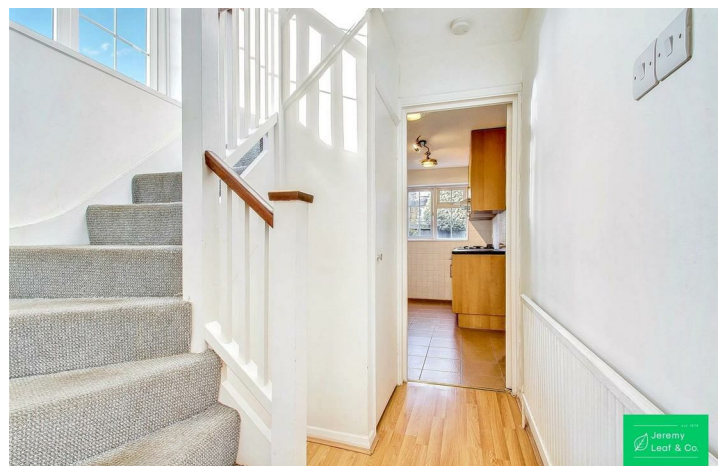
eastfinchley@jeremyleaf.co.uk  
<https://www.jeremyleaf.co.uk/>

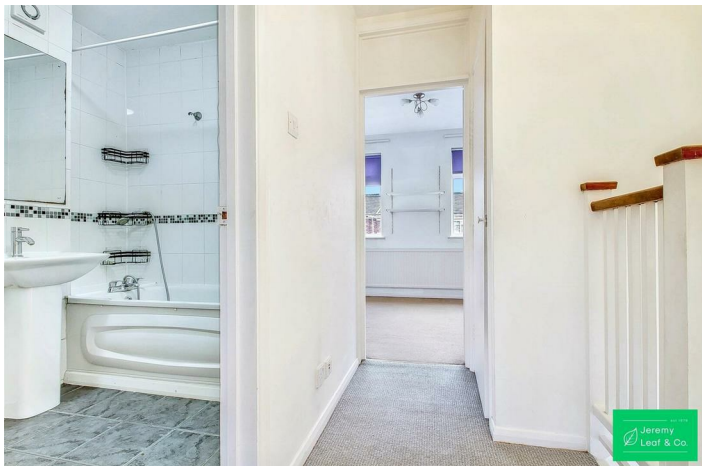
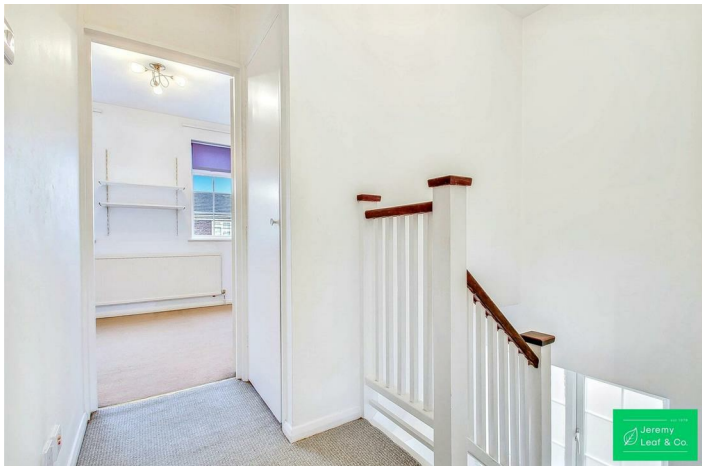
# Ashburnham Close, London, N2 0NH

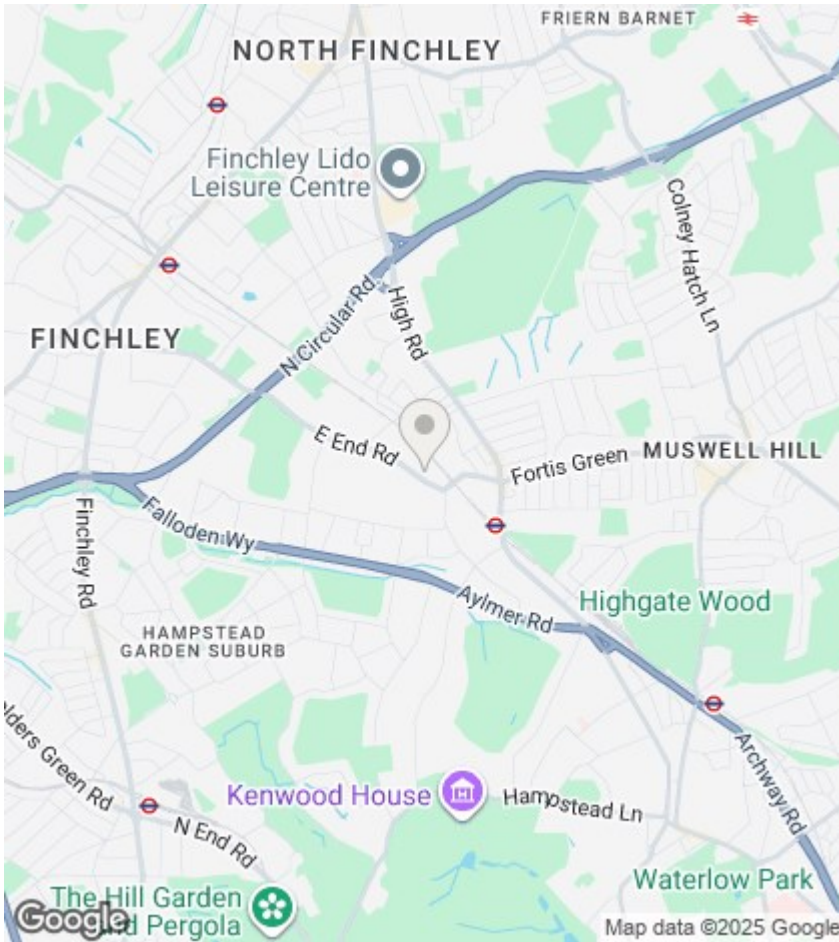
We are delighted to offer for sale a three bedroom, two bathroom end of terrace residence located in this popular residential cul de sac, close to shopping and transport links at East Finchley, including Zone 3 tube station. Offered chain free, the property has excellent potential to be a superb family home.

 3  2  2  D

Council Tax Band: F







## Directions

## Viewings

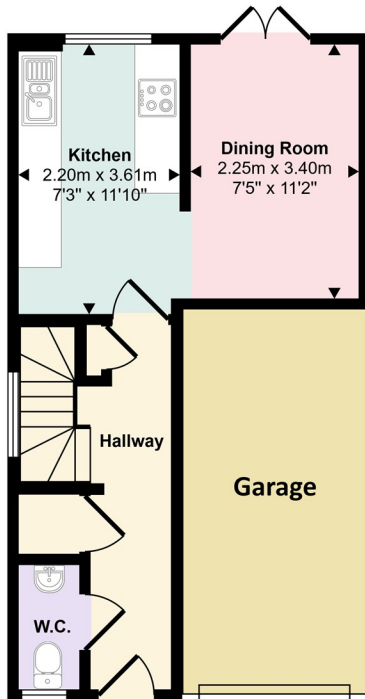
Viewings by arrangement only. Call 020 8444 5222 to make an appointment.

## EPC Rating:

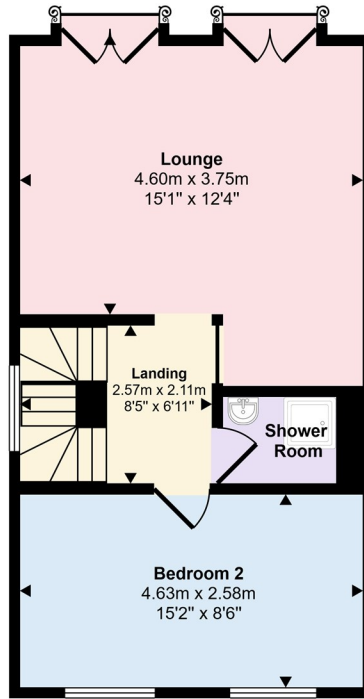
D

Energy Efficiency Rating		Current	Potential
Very energy efficient - lower running costs			
(92 plus)	A		
(81-91)	B		
(69-80)	C		
(55-68)	D	61	
(39-54)	E		
(21-38)	F		
(1-20)	G		
Not energy efficient - higher running costs			
England & Wales		EU Directive 2002/91/EC	

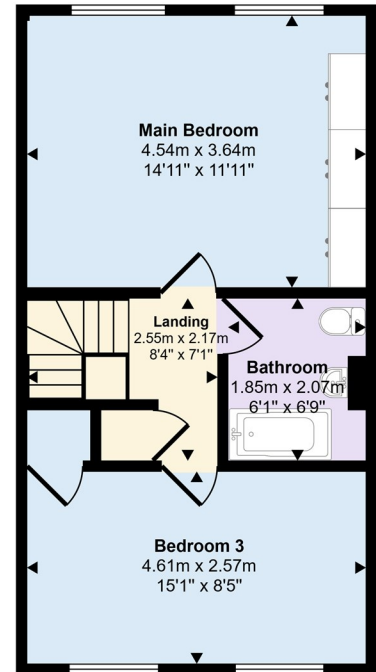
Approx Gross Internal Area  
106 sq m / 1141 sq ft



Ground Floor  
Approx 26 sq m / 285 sq ft



First Floor  
Approx 40 sq m / 431 sq ft



Second Floor  
Approx 39 sq m / 425 sq ft

This floorplan is only for illustrative purposes and is not to scale. Measurements of rooms, doors, windows, and any items are approximate and no responsibility is taken for any error, omission or mis-statement. Icons of items such as bathroom suites are representations only and may not look like the real items. Made with Made Smartly 360